

# Sapphire Rods & Ruby Rods - SP-11A

## Specifications

<b>Model</b>	SP-11A
<b>Outside Diameter</b>	.0285/.0288"
<b>Length</b>	.285/.295"
<b>Material</b>	Unpolished/Sapphire rod

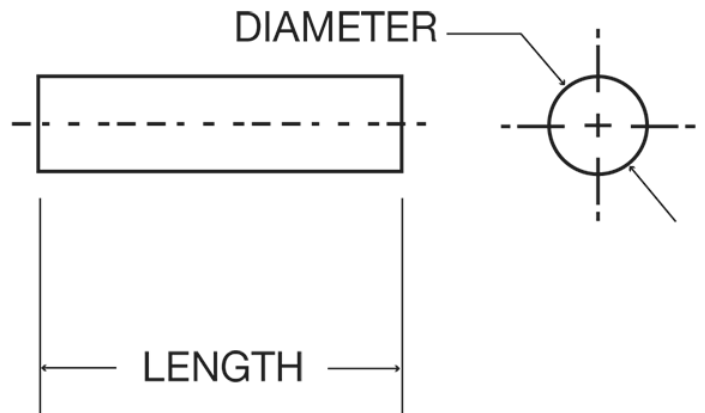


### Description

Sapphire Rods are used in a wide range of applications. A sapphire rod can be made with all surfaces polished for optical and wear applications or with all surfaces fine grind (un-polished) to serve as an insulator. Sapphire Rods are available in a range of outer diameter and lengths. OD's as small as .0175".

### Typical Applications

- Pumps
- Light Pipes
- Spacers
- Insulators
- Wear Applications



### NOT SEEING EXACTLY WHAT YOU NEED?

We specialize in creating a wide range of custom optical components and custom mechanical components including a variety of shapes - from internal holes and tapers to outer flanges, angles and surface finishes. Contact us and we will consult with you to create a custom component that meets all of your specifications.